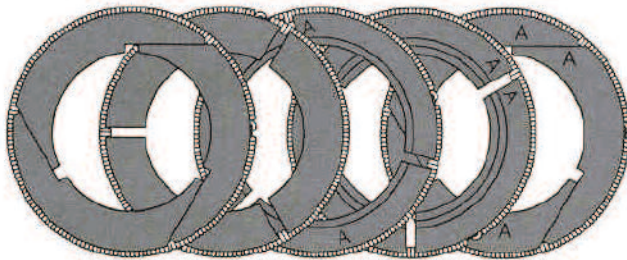


CONTROL FUGITIVE EMISSIONS WITH COOK BUFFERED PACKINGS

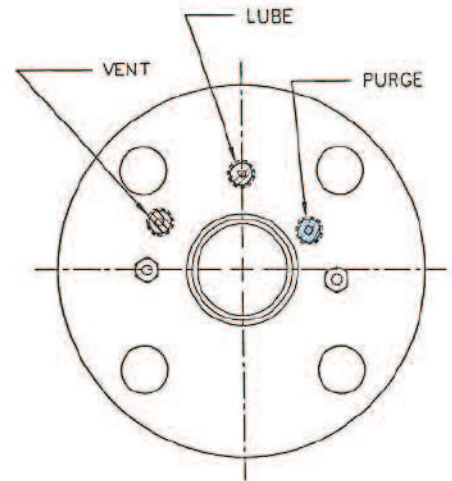
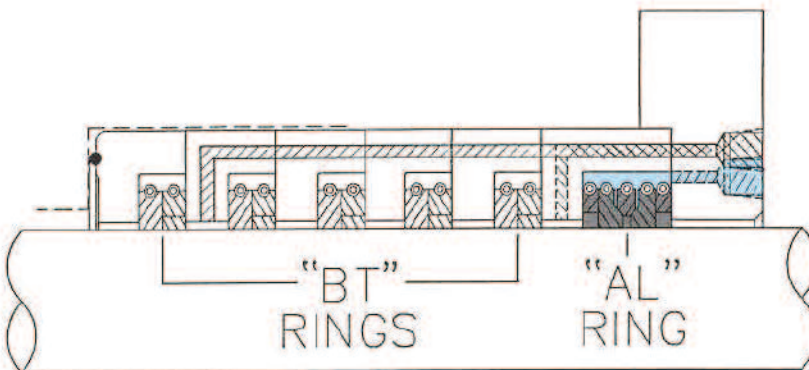
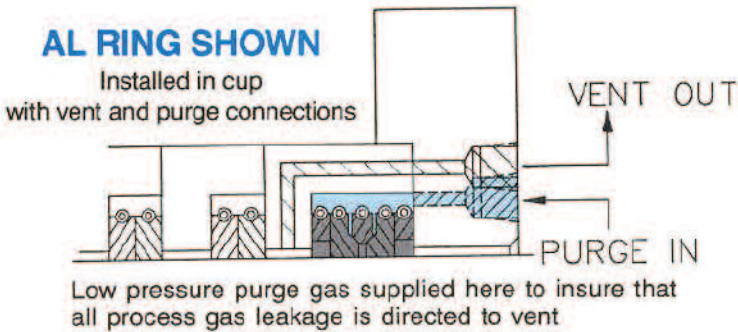
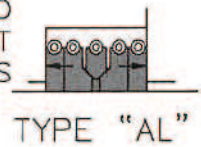
Bulletin No. 587

“AL” RING SET

Consisting of 5 segmented rings configured to be double-acting



SPRING LOADED
TO SEAL AGAINST
BOTH FACES



TYPICAL BUFFERED PACKING CASE CONFIGURATION WITH AL RING